

TRUSTCENTER
KEY TO INTERNET SECURITY

Installation of TC TrustCenter CA certificates (X.509)

Microsoft Internet Explorer 5.0

TC TrustCenter GmbH

Sonninstraße 24-28
D-20097 Hamburg

Postfach 10 60 49
D-20041 Hamburg

Phone: +49 (0)40 / 80 80 26-0
Fax: +49 (0)40 / 80 80 26-1 26
<http://www.trustcenter.de>

All rights reserved. No information or images, fully or partially, in any form or by any means, may be reproduced, copied, duplicated, published or used in electronic systems or translations without the prior written consent of TC TrustCenter. This represents a crime, excluding printing and duplicating for one's own use.

All information in this document is compiled with great care. Neither TC TrustCenter nor the author are liable for any damages or disservice, that are in connection with the use of this document.

„TC TrustCenter“, the TC TrustCenter logo, „Ident Point“, „TC PKI“ and „TC Info Line“ are registered trademarks of the TC TrustCenter GmbH.

All brands, product names and trademarks used in this document, but not listed above, are trademarks or service marks of the respective owners.

Copyright © 2000 TC TrustCenter GmbH

Introduction

One prerequisite for convenient and trustworthy communication via Internet is the installation of TC TrustCenter CA certificates (CA = Certification Authority) on your browser. This will enable you to communicate securely and confidentially with partners that have also obtained a TC TrustCenter certificate.

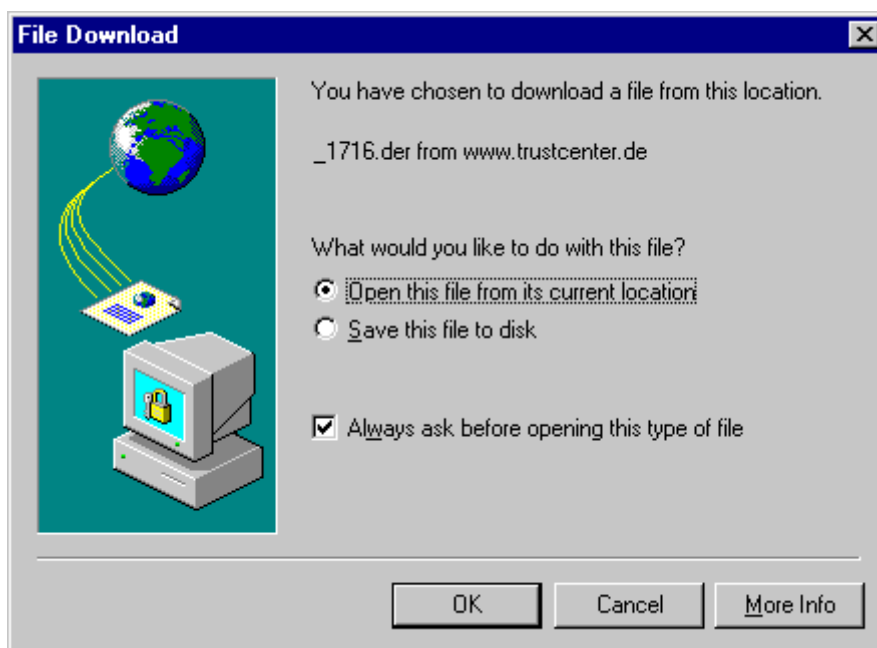
We recommend the use of recent browser versions. Information on browsers where TC TrustCenter CA certificates have already been installed is available on our Web site (<http://www.trustcenter.de/cacerts>). Here you can find out whether or not you need to manually install our certificates.

This description's browser version does not yet contain our CA certificates.

In the following installation manual, the Microsoft Internet Explorer 5.0 acceptance process for TC TrustCenter CA certificates will be explained in detail and illustrated by various screenshots.

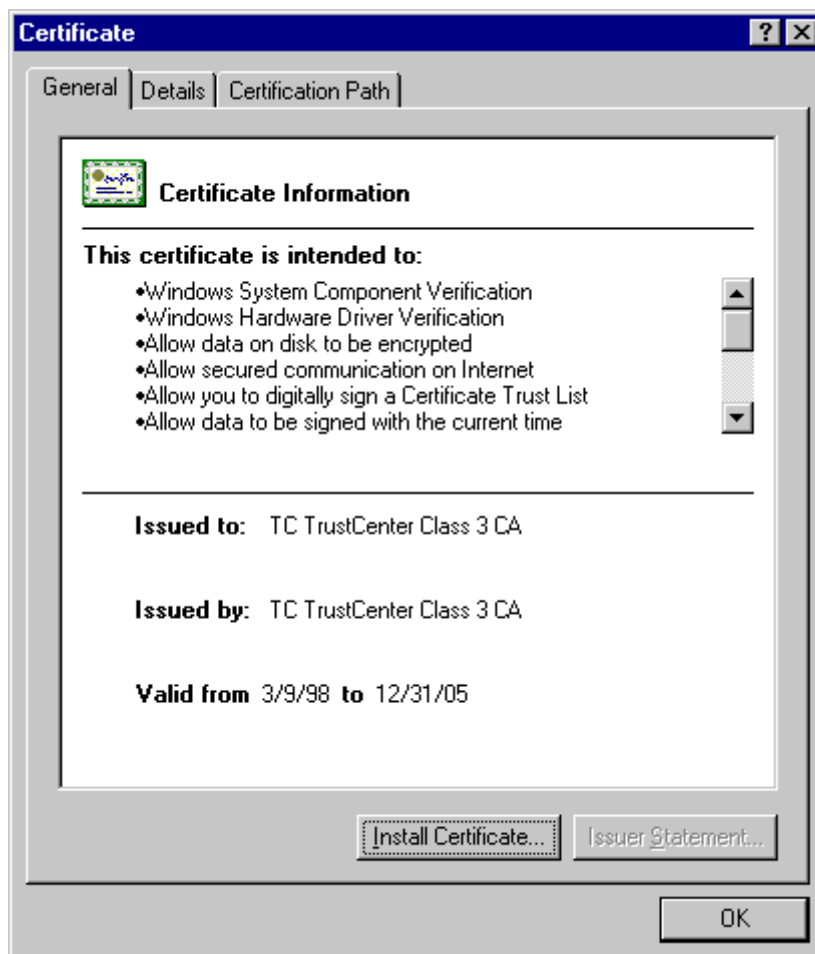
Installation Manual

At first you will be notified by the Microsoft Internet Explorer that a file is downloaded from the Internet onto your computer (see picture below). Some files can cause damage because of viruses, etc; that is why you should make sure that the source is trustworthy before you start downloading.



Please select **Open this file from its current location** to initiate the online acceptance process. Saving the file on the hard drive or on a disk will make the process slightly more complicated. We recommend to keep the box next to **Always ask before opening this type of file** checked for the browser to remind you of the dangers involved during each downloading process. (The above picture displays the data of a **TC TrustCenter CA certificate Class 3**. The data of other certificates differs).

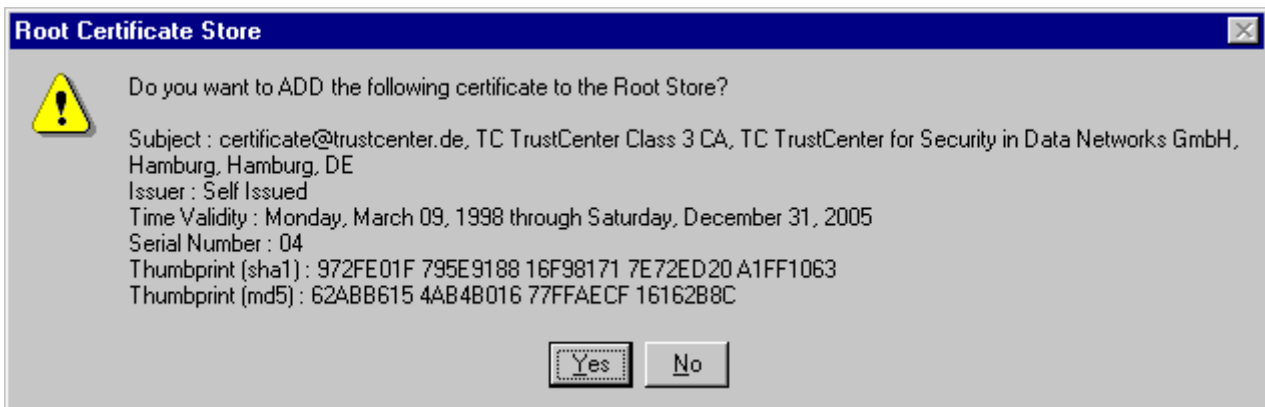
After the confirmation with **OK**, the Internet Explorer will let you know that you are offered a new certificate from a new Certification Authority to be installed into the list of the Certification Authorities of your trust.



Please select **Install Certificate...** to activate the TC TrustCenter certificate's trust status.



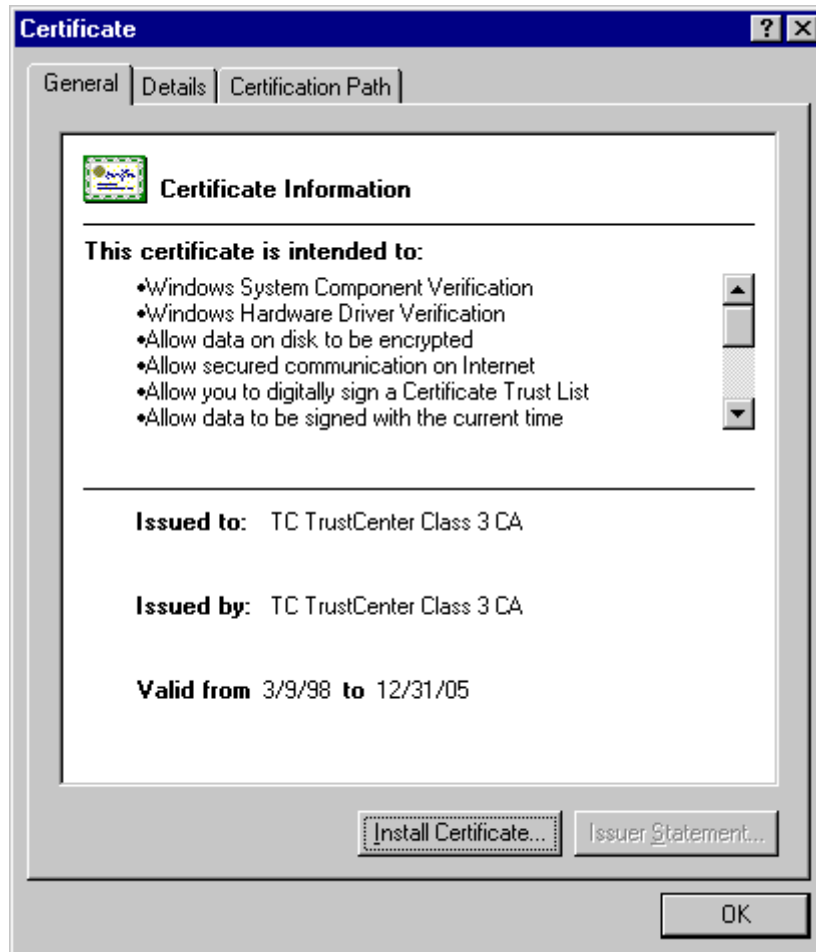
Now the Microsoft Internet Explorer will open the import assistant for the certificate administration. Within the assistant, keep clicking on **continue** without changing the settings. On the last page, click on **Finish** to confirm the integration of the TC TrustCenter certificate into your main memory.



At this point, you will be presented the TC TrustCenter certificate's data for verification. The country code ("DE" for Germany/Deutschland), city ("Hamburg"), state or province ("Hamburg"), issuer ("TC TrustCenter GmbH") and certificate type ("TC TrustCenter Class 3 CA") are listed. Because this certificate was digitally signed by us, the issuer is "Self". The expiration date is followed by the serial number and the fingerprint, which has

been determined through the hash function SHA-1 at one time, through MD5 another time.

Please select **Yes** to finish the acceptance process.



In the last window, please end the installation process by clicking on **OK**.

After you have installed all TC TrustCenter certificates, you can establish secure and confidential connections with Web servers and verify the certificates of e-mail communication partners and developers of software.

The fingerprints (<http://www.trustcenter.de/fingerprints>) allow you to verify the certificate's authenticity.