



TRUSTCENTER
KEY TO INTERNET SECURITY

Installation of TC TrustCenter CA certificates (X.509)

Netscape Communicator 4.x

TC TrustCenter GmbH

Sonninstraße 24-28
D-20097 Hamburg

Postfach 10 60 49
D-20041 Hamburg

Phone: +49 (0)40 / 80 80 26-0
Fax: +49 (0)40 / 80 80 26-1 26
<http://www.trustcenter.de>

All rights reserved. No information or images, fully or partially, in any form or by any means, may be reproduced, copied, duplicated, published or used in electronic systems or translations without the prior written consent of TC TrustCenter. This represents a crime, excluding printing and duplicating for one's own use.

All information in this document is compiled with great care. Neither TC TrustCenter nor the author are liable for any damages or disservice, that are in connection with the use of this document.

„TC TrustCenter“, the TC TrustCenter logo, „Ident Point“, „TC PKI“ and „TC Info Line“ are registered trademarks of the TC TrustCenter GmbH.

All brands, product names and trademarks used in this document, but not listed above, are trademarks or service marks of the respective owners.

Copyright © 2000 TC TrustCenter GmbH

Introduction

One prerequisite for convenient and trustworthy communication via Internet is the installation of TC TrustCenter CA certificates (CA = Certification Authority) on your browser. This will enable you to communicate securely and confidentially with partners that have also obtained a TC TrustCenter certificate.

We recommend the use of recent browser versions. Information on browsers where TC TrustCenter CA certificates have already been installed is available on our Web site (<http://www.trustcenter.de/cacerts>). Here you can find out whether or not you need to manually install our certificates.

This description's browser version does not yet contain our CA certificates.

In the following installation manual, the Netscape Communicator 4.x acceptance process for TC TrustCenter CA certificates will be explained in detail and illustrated by various screenshots.

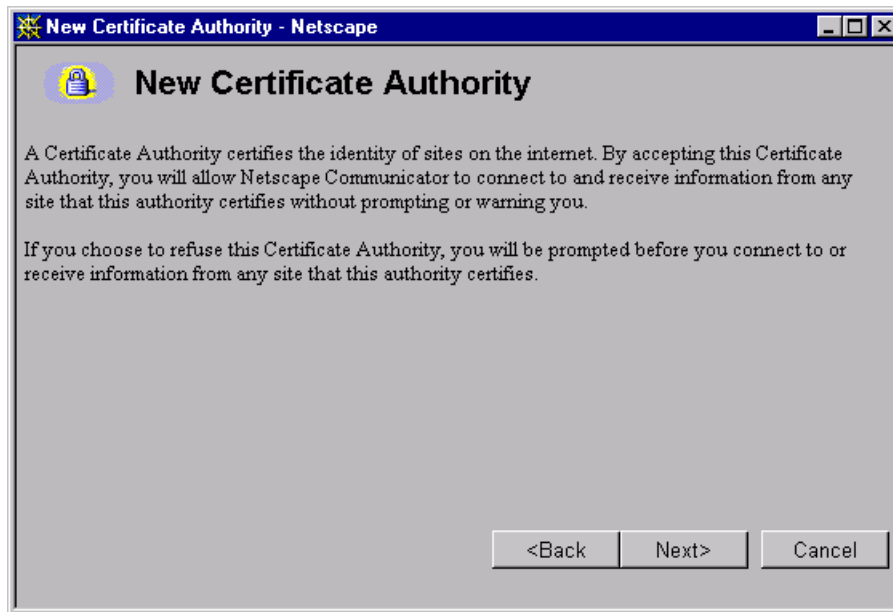
Installation Manual

At the beginning of the installation process, Netscape will let you know that a new Certification Authority (CA) needs to be integrated into your browser (see picture below). After the acceptance of such a certificate, all certificates issued by this CA are considered valid. Since this has quite an impact on the security of connections built up by Netscape, the Netscape assistant should help you with the acceptance process.



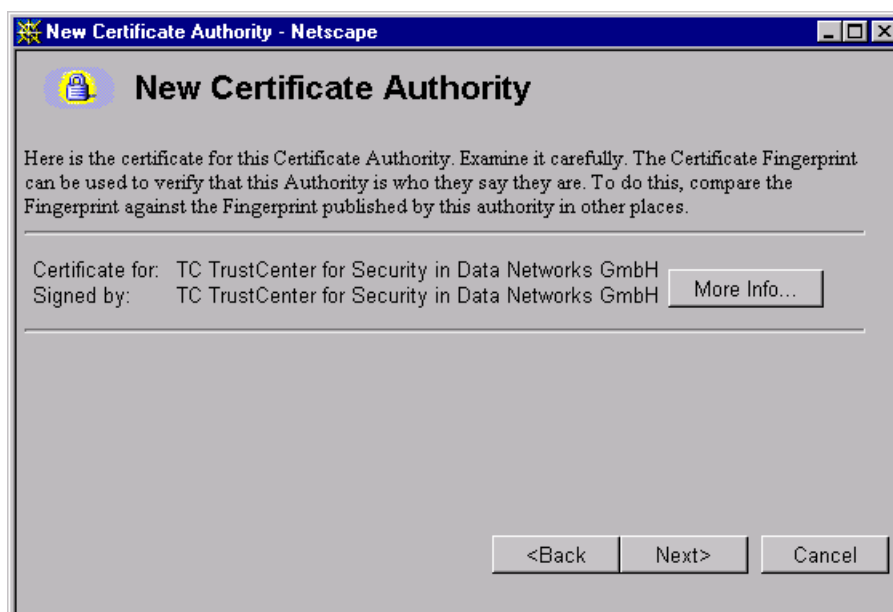
Please select **Next**.

Now Netscape will inform you about a CA Web site (such as www.trustcenter.de) that is to be certified, which is to say that its identity is to be checked. By accepting this site, you are allowing Netscape to establish secure connections with any site that has been certified by us without warning or informing you. If you do not accept the CA certificate, you will need to confirm that you want the connection to be established each time before this is automatically done by Netscape.



Please select **Next**

Now Netscape will present you the certificate and ask you to verify it. The certificate's fingerprint is supposed to help you with the verification. This is achieved by clicking on **More Info...**, which displays a fingerprint that can be compared with those published elsewhere (e.g. in magazines, on stationery, or, as in our case, on fingerprint Web sites).



Please select **Next**.

Now Netscape will ask you for what kind of users you want to accept us as a CA. The options are Web sites (**Accept this Certificate Authority for Certifying network sites**), e-mail users (**Accept this Certificate Authority for Certifying e-mail users**), and developers of software (**Accept this Certificate Authority for Certifying software developers**).



Please check all boxes as shown in the picture above and click on **continue**.

Now Netscape will ask you again if you really want it to establish a secure connection to any site, which has been certified by us without getting a warning that needs to be confirmed by you. You may also accept the certificate and still get information that you are about to establish a secure connection before Netscape does this automatically. Click on the box next to **“Warn me before sending information to sites certified by this Certificate Authority”**. If you have activated this option, you can see a checkmark in the box.



Please select **Next**.

Finally you may give this certificate a name, under which Netscape will include it into the list.



After you have installed all TC TrustCenter certificates, you can establish secure and confidential connections with Web servers and verify the certificates of e-mail communication partners and developers of software.

The fingerprints (<http://www.trustcenter.de/fingerprints>) allow you to verify the certificate's authenticity.